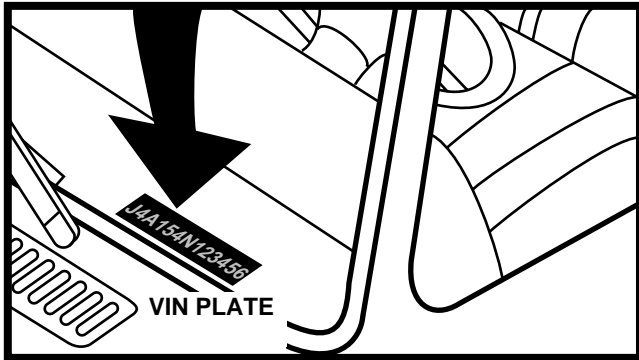


Vehicle Engine Identification



In some vehicles, there are two or more engines that are of the same size but do not use the same products.

To identify the proper product for your vehicle, you must match the engine code from your vehicle identification number with the character listed in our Application Section.

For vehicles manufactured by Chrysler, Ford, GM or Saab from 1972 to 1980, use the fifth character. For vehicles manufactured by Chrysler, Ford, GM or Saab from 1981 to 2003, use the eighth character.

For vehicles manufactured by Mitsubishi from 1983 to 2003, use the eighth character.

For vehicles manufactured by AM General from 1995 to 2003 use the fourth character.

For vehicles manufactured by AMC/EAGLE (except Jeep) from 1972 to 1980 use the seventh character, from 1981 to 1988 use the fourth character, and 1989-1998 use the eighth character.

For vehicles manufactured by Jeep from 1972 to 1974 (up to SN #100000), use the eighth character, from 1974 to 1980 use the seventh character, from 1981 to 1988 use the fourth character, and from 1989-2003 use the eighth character.

For vehicles manufactured by Hyundai from 1981 to 2003 use the eighth character.

For vehicles manufactured by Jaguar - Landrover from 1981 to 2003 use the seventh character.

For vehicles manufactured by Kia from 1994 to 2003 use the eighth character.

For vehicles manufactured by Nissan (except Quest) from 1995 to 2003 use the fourth character.

For vehicles manufactured by Subaru - Suzuki from 1981 to 2003 use the sixth character.

CHRYSLER, FORD, GM and SAAB

1972-1980

1H35L7R100001

↑ ENGINE CODE
Fifth Character

1981-2003

1G3AL69N6CM100001

↑ ENGINE CODE
Eighth Character

MITSUBISHI

1983-2003

JA4MT41PMWP123456

↑ ENGINE CODE
Eighth Character

AM GENERAL

1995-2003

137XE84H2MRE13201

↑ ENGINE CODE
FOURTH CHARACTER

AMC/EAGLE (except Jeep)

1972-1980

A3M798Z700001

↑ ENGINE CODE
Seventh Character

1981-1988

2CEUN3870GB529063

↑ ENGINE CODE
Fourth Character

1989-1998

2E3BB66U9LH038364

↑ ENGINE CODE
Eighth Character

JEEP

1972-1974

(up to SN #100000)

J4A154CN00001

↑ ENGINE CODE
Eighth Character

1974-1980

(from SN #100000)

J4A154N100000

↑ ENGINE CODE
Seventh Character

1981-1988

1JT7E7560G430952

↑ ENGINE CODE
Fourth Character

1989-2003

1J4ET37L5LT438789

↑ ENGINE CODE
Eighth Character

HYUNDAI

1981-2003

KMBRF23S3MZ000001

↑ ENGINE CODE
EIGHTH CHARACTER

JAGUAR - LANDROVER

1981-2003

SAJAV130-GR000002

↑ ENGINE CODE
SEVENTH CHARACTER

KIA

1994-2003

KNASA231XS0000001

↑ ENGINE CODE
EIGHTH CHARACTER

NISSAN (except Quest)

1995-2003

JN1PS3546X000001

↑ ENGINE CODE
FOURTH CHARACTER

SUBARU - SUZUKI

1981-2003

JF1AC45BYGCZ00001

↑ ENGINE CODE
SIXTH CHARACTER

Dodge Truck Engine Identification

Dodge
Fargo

Plymouth
DeSOTO

MARCAS REG TMS REG. U.S. PAT. OFF.

MAKE MODEL

VIN TON

MAX GVW

GROSS VEHICLE WEIGHT (GVW) IS TOTAL WEIGHT OF THE VEHICLE INCLUDING OPTIONS, DRIVER, PASSENGERS, BODY & PAYLOAD. SEE OPERATOR'S MANUAL PKG. FOR SPECIFIC EQUIPMENT REQUIRED FOR A GIVEN GVW RATING. WARRANTY VOID IF ANY RATINGS ARE EXCEEDED. FOR THE ACTUAL GVW & GAWR RATINGS OF THIS VEHICLE, SEE THE SAFETY CERTIFICATION LABEL.

CHRYSLER CORPORATION
MADE IN U.S.A.

On 1967-81 Dodge Trucks the engine model designation consists of the cubic inch displacement followed by a dash number. In many cases, the correct dash number must be known to determine the correct spark plugs to be used. The correct dash number is determined by first locating the Vehicle Identification Plate (rear face of driver's door or driver's side latch post).

Inspect the plate for a Model Serial Number Code (see below). Do not confuse this code with the Vehicle Identification Number (VIN). The fifth character of the Model Serial Number Code should be used in conjunction with the following chart to determine the correct dash number contained in the engine model designation.

ENGINE CODE	ENGINE C.I.D.	APPLICABLE YEARS
A	440-3 (4 bbl.)	72-81
A	198	67-71
B	225-1 (2 bbl.)	67-81
C	225-2 (1 bbl.)	67-81
D	440-1 (4 bbl.)	72-81
D	251-3	67-71
E	318-1 (2 bbl.)	67-81
F	360-1 (2 bbl.)	78-81
F	360	69-77
G	318-3 (2 bbl.)	67-81
J	400-1	74-77
J	400	72-73
J	383	68-71
K	360-3 (2 bbl.)	74-81
K	361-2	67-73
L	361-3	67-77
M	361-4	67-77
N	225-1 (1 bbl.)	74-81
N	413-1	67-73
P	318-1 (4 bbl.)	78-79
P	413-2	72-77
R	413-3 (4 bbl.)	67-81
S	360 Hi-Perf. (4 bbl.)	78-81
S	478	69-72
T	360-1 (4 bbl.)	75-81
T	549	69-73
W	230	69-72
X	Special 6 cyl. gasoline	67-81
V	Special 8 cyl. gasoline	67-81

Displacement Conversion Chart For Popular Engine Sizes

LITERS	CUBIC INCHES	LITERS	CUBIC INCHES	LITERS	CUBIC INCHES	LITERS	CUBIC INCHES	LITERS	CUBIC INCHES	LITERS	CUBIC INCHES
1.0	61	2.0	122	3.1	189	4.2	255	5.3	323	6.6	403
1.1	67	2.1	128	3.2	196	4.2	258	5.4	330	6.8	415
1.2	73	2.2	134	3.2	198	4.3	260	5.6	342	6.9	420
1.3	79	2.2	135	3.3	198.5	4.3	262	5.7	345	7.0	425
1.4	86	2.3	140	3.3	200	4.3	265	5.7	350	7.0	427
1.5	92	2.4	146	3.4	207	4.4	267	5.8	351	7.0	429
1.6	96	2.5	150	3.5	214	4.5	275	5.9	360	7.2	440
1.6	97	2.5	151	3.6	220	4.6	281	6.0	366	7.3	445
1.6	97.6	2.6	156	3.7	225	4.8	292	6.0	368	7.4	454
1.6	98	2.6	158.6	3.8	229	4.9	300	6.1	370	7.5	455
1.7	105	2.7	165	3.8	231	4.9	301	6.2	379	7.5	460
1.8	109.5	2.8	171	3.8	232	5.0	302	6.2	381	7.8	488
1.8	109.8	2.8	173	3.9	238	5.0	304	6.3	384	8.0	488
1.9	118	2.9	177	4.0	243	5.0	305	6.4	390	8.1	494
2.0	121	2.9	180	4.1	250	5.0	307	6.5	395	8.2	500
2.0	121.7	3.0	184	4.1	252	5.2	318	6.6	400	8.8	534

1000cc = 1 LITER.

1000cc = 1 LITER.